



# ATHLETIC COMMUNICATIONS

PO Box 877 | Morgantown, WV 26507-0877  
304.293.2821

WVUSPORTS.com

Ashley Bailey | ashley.bailey@mail.wvu.edu | (o) 304.293.2821 | (c) 304.288.3427

## 2016 Schedule/Results

Aug. 20	GOLD/BLUE SCRIMMAGE	NTS
Aug. 26	at No. 10 Penn State ^	L, 0-3
Aug. 27	vs. No. 19 North Carolina ^	L, 0-3
Aug. 27	vs. Georgia Southern ^	W, 3-0
Sept. 2	vs. Indiana State &	W, 3-2
Sept. 2	vs. Marshall &	L, 2-3
Sept. 3	vs. Morehead State &	W, 3-2
Sept. 9	at California #	W, 3-1
Sept. 10	vs. No. 19 Santa Clara #	L, 1-3
Sept. 10	vs. Grand Canyon #	W, 3-0
Sept. 12	at Pacific	L, 1-3
Sept. 16	WINTHROP \$	W, 3-0
Sept. 17	AKRON \$	W, 3-0
Sept. 17	DARTMOUTH \$	W, 3-0
Sept. 20	No. 5TEXAS*	L, 1-3
Sept. 24	at Texas Tech*	W, 3-0
Sept. 28	TCU*	W, 3-2
Sept. 30	IOWA STATE*	L, 2-3
Oct. 7	OKLAHOMA*	L, 0-3
Oct. 8	OKLAHOMA*	L, 1-3
Oct. 12	at Robert Morris	W, 3-0
Oct. 15	BAYLOR*	L, 1-3
Oct. 20	at No. 6 Kansas*	7:30 p.m.
Oct. 22	at Kansas State*	7 p.m.
Oct. 29	TEXAS TECH*	3:30 p.m.
Nov. 2	at Iowa State*	7:30 p.m.
Nov. 9	KANSAS STATE*	6 p.m.
Nov. 12	at Baylor*	2 p.m.
Nov. 16	KANSAS*	6 p.m.
Nov. 23	at TCU*	TBA
Nov. 26	at Texas *	TBA

All times are Eastern and subject to change.

HOME MATCHES in all caps

\* Big 12 Conference match

^ Penn State Classic (University Park, Pa.)

& Capital Classic (Charleston, W.Va.)

# Cal Classic (Berekeley, Calif.)

\$ WVU Invitational (Morgantown, W.Va.)

## 2016 Big 12 Standings

	Big 12	Pct.	Overall	Pct.
Texas	6-0	1.000	14-2	.875
TCU	3-4	.429	10-7	.558
Kansas	6-1	.857	17-2	.895
Baylor	4-2	.667	16-6	.727
West Virginia	2-5	.266	11-10	.524
Kansas State	4-3	.571	15-5	.750
Iowa State	2-4	.333	10-8	.556
Oklahoma	3-4	.429	12-8	.600
Texas Tech	0-7	.000	10-12	.455



## WEST VIRGINIA Mountaineers

Overall Record: 11-10  
Big 12 Record: 2-5

Head Coach: Reed Sunahara  
Record at WVU: 16-35 (2nd Season)  
Record Overall: 337-209 (16th Season)

## SOCIAL MEDIA



/WVUVolleyball



@WVUVolleyball



@WVUVolleyball

## MATCH INFORMATION

### No. 6 KANSAS Jayhawks

Overall Record: 17-2  
Big 12 Record: 6-1  
Head Coach: Ray Bechard  
At KU: 342-231 (19th Season)  
Overall: 1,058-291 (33rd Season)  
Date: Wednesday, Oct. 20  
Time: 7:30 p.m. ET



Location: Lawrence, Kan./Horejsi Family Athletics Center  
Coverage: ESPN3/Statbroadcast

### KANSAS STATE Wildcats

Overall Record: 15-5  
Big 12 Record: 4-3  
Head Coach: Susie Fritz  
At KSU: 310-173 (16th Season)  
Overall: Same  
Date: Saturday, Oct. 22  
Time: 7 p.m. ET



Location: Manhattan, Kan./Ahearn Field House  
Coverage: K-StateHD.TV/Statbroadcast

## At a Glance

- West Virginia heads to the Sunflower State for a pair of league matches this weekend, taking on No. 6 Kansas on Thursday (7:30 p.m. ET) before facing Kansas State on Saturday (7 p.m. ET.)
- WVU brings an 11-10 overall mark and 2-5 record in league play to Kansas. The Mountaineers will look to end a four-game Big 12 losing streak.
- The Mountaineers recently ended nonconference play with a 9-5 after recording a 3-0 sweep of Robert Morris on Oct. 12.
- Thursday's match at KU marks the fifth time this season West Virginia has faced a ranked opponent: No. 10 Penn State (8/26), No. 19 North Carolina (8/27), No. 19 Santa Clara (9/10), No. 5 Texas (9/20). WVU is 0-5 against ranked opponents, but won sets vs. Texas and Santa Clara.
- The Mountaineers picked up a five-set win over TCU on Sept. 28, with the Horned Frogs receiving votes in the AVCA Coaches' Poll.
- Payton Caffrey earned her fifth Big 12 Rookie of the Week award on Monday. She is the first WVU player to earn more than four weekly awards in a season and is one shy of tying the Big 12 record of six.

## KEY MOUNTAINEERS



S | Haley ROE



MB | Hannah SHREVE



L | Gianna GOTTERBA



OH | Payton CAFFREY



MB | Mia SWANEGAN



RS | Natania LEVAK

K/set.....	0.01	K/set.....	1.59	K/set.....	0.00	K/set.....	4.92	K/set.....	1.789	K/set.....	1.56
Att. pct.....	-.667	Att. pct.....	.267	Att. pct.....	.000	Att. pct.....	.236	Att. pct.....	.235	Att. pct.....	.141
A/set.....	5.84	A/set.....	0.03	A/set.....	0.64	A/set.....	0.32	A/set.....	0.07	A/set.....	0.25
SA/set.....	0.07	SA/set.....	0.00	SA/set.....	0.16	SA/set.....	0.35	SA/set.....	0.14	SA/set.....	0.18
D/set.....	1.51	D/set.....	0.13	D/set.....	3.89	D/set.....	2.27	D/set.....	0.34	D/set.....	1.31
B/set.....	0.01	B/set.....	0.96	B/set.....	0.00	B/set.....	0.41	B/set.....	1.36	B/set.....	0.93

**2016 QUICK FACTS**

**UNIVERSITY INFORMATION**

**Location:** Morgantown, W.Va.  
**Enrollment:** 32,348  
**Nickname:** Mountaineers  
**Colors:** Old Gold (PMS 124) and Blue (PMS 295)  
**Conference:** Big 12  
**President:** Dr. E Gordon Gee  
**Director of Athletics:** Shane Lyons (West Virginia '87)  
**NCAA Faculty Representative:** Dr Jeff Neely

**COACHING STAFF**

**Head Coach:** Reed Sunahara (2nd season, UCLA '89)  
**Record at WVU:** 10-29 (1 season)  
**Overall Record:** 331-203 (15 seasons)  
**Assistants:** Rebecca Rudnick (2nd season, Liberty '05)  
 Jojit Coronel (1st season, UC-Santa Cruz, '95)

**FACILITY INFORMATION**

**Home Court:** WVU Coliseum  
**Capacity:** 14,000  
**Opened:** 1970

**VOLLEYBALL HISTORY**

**Season of Volleyball:** 43rd  
**First Year of Volleyball:** 1974  
**All-Time Record:** 656-694 (.486)  
**NCAA tournament appearances:** None

**TEAM INFORMATION**

**2015 Record:** 5-24  
**2015 Big 12 Conference Record:** 0-16  
**Home Record:** 1-9  
**Away Record:** 1-12  
**Neutral Site Record:** 3-3  
**Starters Returning/Lost:** 4+libero/2  
**Letterwinners Returning/Lost:** 7/4  
**Newcomers:** 8  
 Twitter: @WVUVolleyball  
 Instagram: @WVUVolleyball

**MEDIA INFORMATION**

**Assistant Director of Athletic Communications/Vball**  
**Contact:** Ashley Bailey  
**Email:** ashley.bailey@mail.wvu.edu  
**Office:** (304) 293-2821  
**Fax:** (304) 293-4105  
**Website:** www.WVUsports.com  
**Sr. Associate AD/Communications:** Michael Fragale  
**Assistant AD/Communications:** Bryan Messerly  
**Director of Digital Media:** John Antonik  
**Director of Football Communications:** Mike Montoro  
**Director of Athletic Publications:** Joe Swan  
**Multimedia Specialist:** Kristin Coldsnow  
**Digital Media Manager:** Grant Dovey  
**Assoc. Director/Ath. Comm.:** Russell Luna  
**Assoc. Director/Ath.Comm.:** Shannon McNamara  
**Assist. Director/Ath. Comm.:** Charlie Healy

**NUMERICAL ROSTER**

No.	Name	Pos.	Ht.	Cl.	Hometown/Previous School
1	Payton Caffrey	OH	6-0	Fr.	Chuluota, Fla./Winter Springs
2	Haley Roe	S/DS	5-10	Sr.	Campbell, Calif./Saint Francis
3	Morgan Montgomery	OH	6-1	Jr.	Centennial, Colo./Grandview
4	Gianna Gotterba	L	5-6	Jr.	Stockton, Calif./St. Mary's
5	Julia Avoletta	S/RS	6-2	Fr.	Sterling, Va./Dominion
6	Mia Swanegan	MB	6-1	Jr.	Blue Springs, Mo./TCU
7	Zuri Smith	OH/MB	6-5	r-Fr.	Sumter, S.C./Sumter (Colorado)
9	Erin Slinde	S	6-0	Fr.	Rosemount, Minn./Rosemount
10	Taylor Cross	DS	5-7	Jr.	Colorado Springs, Colo./New Mexico
11	Maggie Hallow	OH/DS	5-9	Fr.	Greenville, N.C./J.H. Rose
12	Gabrielle Cuckovich	DS	5-5	Fr.	Rochester Hills, Mich./Stoney Creek
13	Natania Levak	RS/MB	6-1	Fr.	Pazin, Croatia/Pazinski Kolegij
14	MaTia Hughes	DS/L	5-5	Sr.	Atlanta, Ga./NYU
15	Hannah Shreve	MB	6-3	Sr.	Charleston, W.Va./George Washington
17	Katelyn Evans	OH	6-1	Fr.	Palmdale, Calif./Highland

**ALPHABETICAL ROSTER**

No.	Name	Pos.	Ht.	Cl.	Hometown/Previous School
5	Julia Avoletta	S/RS	6-2	Fr.	Sterling, Va./Dominion
1	Payton Caffrey	OH	6-0	Fr.	Chuluota, Fla./Winter Springs
10	Taylor Cross	DS	5-7	Jr.	Colorado Springs, Colo./New Mexico
12	Gabrielle Cuckovich	DS	5-5	Fr.	Rochester Hills, Mich./Stoney Creek
17	Katelyn Evans	OH	6-1	Fr.	Palmdale, Calif./Highland
4	Gianna Gotterba	L	5-6	Jr.	Stockton, Calif./St. Mary's
11	Maggie Hallow	OH/DS	5-9	Fr.	Greenville, N.C./J.H. Rose
14	MaTia Hughes	DS/L	5-5	Sr.	Atlanta, Ga./NYU
13	Natania Levak	RS/MB	6-1	Fr.	Pazin, Croatia/Pazinski Kolegij
3	Morgan Montgomery	OH	6-1	Jr.	Centennial, Colo./Grandview
2	Haley Roe	S/DS	5-10	Sr.	Campbell, Calif./Saint Francis
15	Hannah Shreve	MB	6-3	Sr.	Charleston, W.Va./George Washington
9	Erin Slinde	S	6-0	Fr.	Rosemount, Minn./Rosemount
7	Zuri Smith	OH/MB	6-5	r-Fr.	Sumter, S.C./Sumter (Colorado)
6	Mia Swanegan	MB	6-1	Jr.	Blue Springs, Mo./TCU

**PRONUNCIATIONS**

HC	Reed Sunahara.....	sun-nuh-HA-ruh
AC	Jojit Coronel.....	joe-JIT core-NELL
4	Gianna Gotterba .....	GOT-er-bah
6	Mia Swanegan .....	sw-ANN-uh-gan
7	Zuri Smith .....	ZUHR-ree
9	Erin Slinde .....	SLIN-dee
12	Gabrielle Cuckovich.....	COO-cuh-vitch
13	Natania Levak .....	LEH-vick
15	MaTia Hughes.....	mah-TEE-ah

**MOUNTAINEER MASCOT**

One of the most beloved of all West Virginia athletic traditions, the Mountaineer mascot, first appeared at WVU sporting events during the 1934-35 school year with Lawson Hill taking on the role. The Mountaineer is selected each year by the Mountain Honorary – the school's prestigious senior honorary. The Mountaineer's costume is tailored to fit each winner, and male Mountaineers customarily grow beards during their tenure to go along with the coonskin cap and rifle, although the beard is not a requirement for the mascot position. The 2016-17 Mountaineer is Troy Clemons from Maxwelton, West Virginia.



### HOW THEY MATCH UP

<b>WVU</b>	<b>Stat</b>	<b>KANSAS</b>
.194	Attacking	.136
11.80	Kills/Set	11.04
11.11	Assists/Set	10.38
1.01	Aces/Set	0.60
13.66	Digs/Set	15.37
2.51	Blocks/Set	1.91

<b>WVU</b>	<b>Stat</b>	<b>KANSAS STATE</b>
.194	Attacking	.219
11.80	Kills/Set	13.26
11.11	Assists/Set	12.43
1.01	Aces/Set	0.76
13.66	Digs/Set	14.97
2.51	Blocks/Set	2.03

### MOUNTAINEERS IN THE NATIONAL RANKINGS

<b>Kills</b>	
Payton Caffrey	5th (4.89 k/s)
Payton Caffrey	8th (386)
<b>Points</b>	
Payton Caffrey	6th (5.46 p/s)
Payton Caffrey	7th (362.0)
<b>Blocks</b>	
Team	55th (2.42 b/s)
Team	38th (157)
Mia Swanegan	22nd (1.39 b/s)
Mia Swanegan	16th (103)

### WVU vs. RANKED OPPONENTS

No. 9 Penn State	L, 0-3
No. 19 North Carolina	L, 0-3
No. 19 Santa Clara	L, 1-3
No. 5 Texas	L, 1-3
RV TCU	W, 3-2
RV Baylor	Oct. 15
No. 6 Kansas	Oct. 20
RV Kansas State	Oct. 22
RV Kansas State	Nov. 9
RV	Nov. 12
No. 8 Kansas	Nov. 16
RV TCU	Nov. 23
No. 4 Texas	Nov. 26

### MOST RECENTLY...

Win	10/12/16 at Robert Morris
Big 12 win	9/28/16 vs. TCU
Went 5 sets	9/30/16 vs. Iowa State
Won in 5	9/28/16 vs. TCU
Went 4 sets	10/12/16 at Robert Morris
Won in 4	9/10/16 at California
Player to w/ 30 kills	M. Montgomery
Date	9/15/15 vs. Marshall (36)
Player w/ 40 assists	B. Sample
Date	9/15/15 vs. Marshall (59)
Player w/ 5 aces	Payton Caffrey
Date	9/10/16 vs. Santa Clara (5)
Player w/ 10 BA	E. McCoy
Date	10/2/13 at TCU (10)
Player w/ 30 digs	S. Russo
Date	10/15/11 vs. Pitt (33)
Hit .300 as a team	9/24/16 vs. Texas Tech (.360)
Had 12 team blocks	9/12/16 at Pacific (12)
Had 70 digs	9/10/16 vs. Santa Clara (80)
Had 60 assists	9/28/16 vs. TCU (62)

### KANSAS SERIES HISTORY

All-Time Record	0-10
Most Recent Meeting	Nov. 21, 2015
Outcome	L, 0-3
First Meeting	Sept. 4, 1999
Outcome	L, 1-3
Home Record	0-5
Visitor Record	0-5
Neutral Site Record	N/A
Opponents' Highest Ranking	No. 24
Date	2012, 2013

### KANSAS STATE SERIES HISTORY

All-Time Record	2-6
Most Recent Meeting	Oct. 28, 2015
Outcome	L, 0-3
First Meeting	Sept. 27, 2012
Outcome	L, 0-3
Home Record	1-3
Visitor Record	1-3
Neutral Site Record	N/A
Opponents' Highest Ranking	No. 22
Date	2014

### MOUNTAINEERS IN THE BIG 12

<b>Hitting</b>		<b>Points</b>	
Team	9th .197	Payton Caffrey	2nd 5.46
Opponent (K)	4th .243	<b>Assists</b>	
<b>Assists</b>		Haley Roe	9th 5.75
Team	7th 11.91	<b>Kills</b>	
<b>Kills</b>		Payton Caffrey	2nd 4.89
Team	7th 13.03	<b>Blocks</b>	
<b>Blocks</b>		Mia Swanegan	1st 1.39
Team	3rd 2.47	<b>Service Aces</b>	
<b>Service Aces</b>		Payton Caffrey	2nd 0.34
Team	6th 1.09	<b>Digs</b>	
<b>Digs</b>		Gianna Gotterba	5th 3.86
Team	8th 13.28		

### AVCA COACHES' POLL - Week 7

Rank	School (Votes)	Points	Record	Previous
1	Nebraska (62)	1598	16-1	2
2	Texas (1)	1478	14-2	4
3	Minnesota	1446	14-3	3
4	Wisconsin	1431	15-2	1
5	San Diego	1355	17-2	5
6	Kansas	1235	17-2	6
7	Washington	1195	16-2	7
8	North Carolina	1137	16-2	8
9	Penn State (1)	1119	16-3	10
10	Florida	1097	17-2	9
11	Michigan State	838	16-4	14
12	Florida State	829	14-3	15
13	Hawai'i	716	14-5	17
14	Stanford	661	11-5	12
15	UCLA	629	14-4	20
T-16	BYU	620	17-3	11
T-16	Michigan	620	16-4	18
18	Washington State	449	15-5	13
19	Ohio State	430	13-7	19
20	Utah	379	14-5	21
21	Kentucky	328	15-4	23
22	Illinois	291	13-6	24
23	Oregon	255	12-5	16
24	Purdue	155	12-7	22
25	Southern California	108	13-6	NR

Others receiving votes: Arizona 104; Western Kentucky 101; Colorado 78; Dayton 46; Creighton 24; Missouri 12; UNLV 8; Kansas State 4





### CAFFREY COLLECTS FIFTH BIG 12 HONOR

Payton Caffrey was named the Big 12 Rookie of the Week for the fifth time this season as announced by the league on Monday. A native of Chuluota, Florida, Caffrey led all Big 12 freshman last week with 4.86 kills per set and 5.21 points per set. Her numbers put her second and third, respectively, amongst all league players for the week. Caffrey, who earned the accolade for the second straight week, is one award shy of tying the Big 12 record of six.

### GOTTERBA NEARING MILESTONE

Junior libero Gianna Gotterba is nearing a career milestone. The native of Stockton, California, is 43 digs shy of her 1,000th career dig. Gotterba, who took over as WVU's libero during her freshman season in 2014, has totaled 957 digs in her career and has averaged 3.45 digs per set through her first three years. That number would place her fifth on WVU's career digs per set list.

### SHREVE ENTERS THE RECORD BOOKS

With a pair of block assists against Baylor, senior Hannah Shreve has joined the program's all-time top 10 list in the category. The middle blocker from Charleston, West Virginia, has a total of 243 career block assists and is tied with Alison Zemanski (2001-04) for ninth all-time. Jen McCuen owns the program record for block assists with 417 from 1988-92.

### CAFFREY COMING CLOSE...

With 17 digs against the Bears, Caffrey has now totaled 386 kills on the season and is in third place for kills by a freshman. She needs 14 more to tie the program's single-season record for kills by a freshman is 400, set in 1996 by Megan Porter. That number would also move her into WVU's top-10 single season kills list.

### WVU WRAPS NONCONFERENCE SCHEDULE

The Mountaineers are coming off a 3-0 win at Robert Morris on Wednesday. The sweep of the Colonials marked the end of nonconference play for the Mountaineers, who compiled a 9-5 record outside of league play in 2016.

### THE MOUNTAINEERS VS. KANSAS/K-STATE

WVU is 0-10 against Kansas, and 2-6 all-time against K-State. The Mountaineers took a 3-1 triumph of the Wildcats back in September of 2013 for their first-ever Big 12 win, and won a five-set thriller in November of 2014 for their first defeat of a top-25 RPI team.

### HOMETOWN CROWD

For Payton Caffrey and Mia Swanegan, there will be several familiar faces in the crowd this week. Caffrey is originally from Wichita, Kansas, and will have family in attendance. Swanegan is a native of Blue Springs, Missouri, and will also have a cheering section this week.

### BREAK OUT THE BROOMS

WVU's sweep of RMU was its seventh of the season. The Mountaineers have recorded 3-0 wins against Georgia Southern, Grand Canyon, Dartmouth, Winthrop, Akron, Texas Tech and Robert Morris this season. They've not had seven sweeps since 2014, when WVU recorded 10 on the season.

### CAFFREY HAS CAREER NIGHT

Freshman Payton Caffrey had a career night in WVU's win over the Horned Frogs. The freshman from Chuluota, Florida, had a career-best 20 digs and netted 21 kills for her eighth double-double of the season. The reigning Big 12 Co-Rookie of the Week is tied for the league lead in double-doubles and ranks second in kills, points and service aces.

### SUNAHARA TAKES FIRST BIG 12 WIN

The Mountaineers picked up their first Big 12 win since November of 2014 on Saturday with a 3-0 sweep of Texas Tech in Lubbock, Texas. The league win was also the first Big 12 win for coach Reed Sunahara. Prior to Saturday, WVU's last conference victory came in a 3-2 thriller at Kansas State on Nov. 29, 2014.

### CAFFREY HONORED... AGAIN

Freshman Payton Caffrey has been tabbed the Big 12 Co-Rookie of the Week for the week of Sept. 26, as announced by the league on Monday. She shares the award with Micaya White of Texas. This week marks the second consecutive week and third time overall Caffrey has earned the award. Caffrey ended the week leading the Big 12 in both points per set (6.50) and aces per set (0.50) while ranking second in kills per set with 5.71. Overall, she ranks second in the league with 4.95 kills per set, 0.40 aces per set and 5.57 points per set. The outside hitter from Chuluota, Florida, led WVU with 26 kills in a 3-1 loss to No. 5 Texas on Tuesday in Morgantown. She hit .259 in the match and just missed her eighth double-double of the season with nine kills in addition to a pair of aces. On Saturday, Caffrey led WVU to its first Big 12 win since 2014 with a 3-0 sweep of Texas Tech in Lubbock, Texas. She netted a team-best 14 kills eight digs, three blocks and a pair of aces, hitting .323 in the match.

### SWANEGAN NAMED BIG 12 DEFENSIVE PLAYER OF THE WEEK

Mia Swanegan led the league in blocking with a total of 20 on the week, averaging 1.54 per set. The junior middle blocker registered a team-best nine total blocks against Pacific on Monday, the most by a Big 12 player that week. She then combined for 11 blocks on the weekend, including five in a 3-0 win over Dartmouth, to help lead the Mountaineers to the WVU Invitational title. It marks her first career weekly conference award.

### CAFFREY NAMED BIG 12 ROOKIE PLAYER OF THE WEEK

Payton Caffrey led all freshmen with 4.38 kills per set and 4.88 points per set, ranking second in the league last week. The freshman outside hitter registered double-doubles against Pacific (14 kills, 10 digs), Winthrop (10 kills, 10 digs) and Akron (17 kills, 10 digs) to bring her total to a league-best of seven this season. Her .406 attack percentage against Akron ranked eighth-best in the Big 12 this week, while her 17 kills against the Zips were second-most in a three-set match, while her four services aces ranked eighth in the league this weekend. Caffrey's efforts earned her WVU Invitational MVP honors as well as WVU Student-Athlete of the Week accolades.

### MAKE THAT A DOUBLE

Payton Caffrey notched three more double-doubles this week and is now the league leader with seven double-doubles on the season. Haley Roe is the only other Mountaineer to record a double-double this season.

Payton Caffrey		
8/27 vs. UNC .....	17 kills .....	10 digs
9/3 vs. MSU .....	26 kills .....	10 digs
9/9 vs. Cal .....	15 kills .....	10 digs
9/10 vs. SC .....	20 kills .....	16 digs
9/12 vs. UoP .....	14 kills .....	10 digs
9/16 vs. WU .....	10 kills .....	10 digs
9/17 vs. UA .....	17 kills .....	10 digs
9/28 vs. TCU .....	21 kills .....	20 digs
10/8 vs. OU .....	18 kills .....	12 digs

Haley Roe		
9/10 vs. SC .....	10 digs .....	24 assists
9/28 vs. TCU .....	16 digs .....	22 assists
9/30 vs. ISU .....	15 digs .....	26 assists





**REED SUNAHARA**  
Head Coach | Second Season  
UCLA, 1989

Reed Sunahara enters his second season at the helm of the Mountaineers after being named the fourth head coach in West Virginia University volleyball program history in March of 2015.

In his first season guiding the Mountaineers, Sunahara led the program to a thrilling 3-2 win over Marshall. The victory marked WVU's first over its in-state rival since 2010, bringing the Golden Ball Trophy back to Morgantown.

Outside hitter Morgan Montgomery and libero Gianna Gotterba flourished under Sunahara's tutelage. After posting 38 kills in her freshman season in 2014, Montgomery went on to lead WVU in kills per set, including a career-best 31 in the win over Marshall. Her 3.74 kills per set and 4.14 points per set ranked third in the Big 12. Gotterba developed into a solid defensive leader on the floor, ranking sixth in the league with 3.56 digs per set.

Montgomery, Gotterba and Hannah Shreve all earned Big 12 Academic Team honors for the Mountaineers. Shreve, who completed her bachelor's degree in three years, earned the Dr. Gerald Lage Award from the league and was named a WVU Foundation Outstanding Senior for her work in the classroom.

Sunahara brought more than 15 years of NCAA Division I experience and strong ties to USA Volleyball. In addition, he has coached five AVCA All-Americans, three AVCA Region Freshman of the Year honorees, three conference Player of the Year selections, six conference Freshman of the Year selections and 26 all-conference honorees.

He joined the Mountaineers after spending the previous season as the head coach at Buffalo, accruing a 17-15 mark in his one season with the Bulls.

Sunahara served as the top assistant for the U.S. National Team from March of 2013 to January of 2014, helping Team USA to a 25-6 record and a No. 2 world ranking at that time. He also served as the head coach for Team USA during its gold medal run at the 2012 Women's Pan American Cup in Juarez, Mexico, and was a NORCECA instructor, guiding both the Jamaican National Team and U18 NORCECA Women's Continental Championship teams to gold medals as well.

Prior to his time with USA Volleyball, Sunahara spent 11 seasons as the head coach at Cincinnati, where he led the Bearcats to eight NCAA Tournament appearances and recorded 20 or more wins every season. The Bearcats won the 2011 Big East Tournament, finishing with an overall record of 27-10 and a league mark of 12-2 while a trio of players garnered all-conference accolades. Cincinnati was also the 2009 and 2010 Big East regular season champion, with Stephanie Niemer garnering Big East Player of the Year and AVCA All-America honors both seasons. The Bearcats advanced to the NCAA Second Round in 2009, 2010 and 2011.

The Bearcats won a share of the first-ever Big East regular-season crown in 2008, posting an impressive 14-0 home record. Sunahara guided the program to the NCAA Second Round for the second time in program history, with Jessie Nevitt earning her fourth First-Team All-Big East honors and her third All-America accolades. From 2000 to 2007, Cincinnati posted double-digit conference wins on six occasions.

Sunahara garnered Big East Coach of the Year accolades in 2008 and 2010, and was the C-USA Coach of the Year in 2001. Prior to joining the Big East, Cincinnati won the 2001 and 2003 C-USA Championships, qualifying for the NCAA Tournament both seasons and advancing to the NCAA Second Round in 2001. He departed as the winningest coach in UC history.

Sunahara spent two seasons as an assistant coach with the Bearcats, helping them to a C-USA Tournament Championship in 1999. He served as the head coach for the University of Toledo from 1995-96 after serving as an assistant coach for the Rockets from 1993-94. Sunahara got his start in coaching as an assistant with the men's team at UCLA, his alma mater, from 1990-93 after serving as a graduate assistant in 1987 and 1989. He helped the Bruins to national championships in 1987, 1989 and 1993.

A voter in the AVCA Top-25 poll from 2002 to 2011, Sunahara was the C-USA Volleyball President from 2002 to 2003 and was the Big East Volleyball President from 2006 to 2007. He was also a head coaches committee representative from 2006 to 2008 and served on the AVCA All-American Selection Committee in 2014.

A native of Hilo, Hawaii, Sunahara was a two-time All-American and three-time NCAA Champion at UCLA alongside Olympians Ricci Luyties, Doug Partie, Dave Saunders and AVP legend and current U.S. Olympic Team coach Karch Kiraly before graduating with a degree in sociology in 1989. He won a pair of USVBA National Championships with Nike/Molten in 1987 and 1990, and went on to play professionally for Cisneros Isla Verdes in the Canary Islands, Spain.

**COACHING HISTORY**

1987-89	UCLA - Graduate Assistant (M)
1990-93	UCLA - Assistant Coach (M)
1993-94	Toledo - Assistant Coach
1995-96	Toledo - Assistant Coach
1997-99	Cincinnati - Assistant Coach
2000-11	Cincinnati - Head Coach
2013	U.S. National Team - Assistant Coach
2014	Buffalo - Head Coach
2015-present	West Virginia - Head Coach

**COACHING RECORDS**

<u>Year</u>	<u>School</u>	<u>Record</u>	<u>Postseason</u>
1995	Toledo	7-21	
1996	Toledo	12-19	
2000	Cincinnati	24-10	NCAA First Round
2001	Cincinnati	23-8	NCAA Second Round
2002	Cincinnati	23-9	NCAA First Round
2003	Cincinnati	27-6	NCAA First Round
2004	Cincinnati	22-11	
2005	Cincinnati	20-12	
2006	Cincinnati	22-7	
2007	Cincinnati	19-12	
2008	Cincinnati	27-7	NCAA Second Round
2009	Cincinnati	25-11	NCAA First Round
2010	Cincinnati	30-6	NCAA Second Round
2011	Cincinnati	27-10	NCAA Second Round
2014	Buffalo	17-15	
2015	West Virginia	5-24	

**AWARDS & HONORS**

- 2010 Big East Coach of the Year
- 2008 Big East Coach of the Year
- 2001 Conference USA Coach of the Year

**CHAMPIONSHIPS**

- 2011 BIG EAST Tournament Champions
- 2010 BIG EAST Champions
- 2008 BIG EAST Co-Champions
- 2003 C-USA Co-Champions
- 2000 C-USA Division Champions
- 1999 C-USA Division Champions
- 1993 NCAA Champion (M)
- 1989 NCAA Champion (M)
- 1987 NCAA Champion (M)





**1 | PAYTON CAFFREY**  
Freshman | Outside Hitter | 6-0

Chuluota, Fla.  
Winter Springs HS

**AWARDS & HONORS**

- Penn State Classic All-Tournament Team
- Big 12 Rookie of the Week (Aug. 29)
- WVU Student-Athlete of the Week (Sept. 6)
- Cal Classic All-Tournament Team
- WVU Invitational MVP
- Big 12 Rookie of the Week (Sept. 19)
- WVU Student-Athlete of the Week (Sept. 19)
- Big 12 Co-Rookie of the Week (Sept. 26)
- Big 12 Rookie of the Week (Oct. 10)
- Big 12 Rookie of the Week (Oct. 19)

**CAREER HIGHS**

Kills: 27, twice  
Hitting: .406 vs. Akron, 9/17/16  
Assists: 6 vs. TCU, 9/28/16  
Aces: 5 vs. Santa Clara, 9/10/16  
Digs: 20 vs. TCU, 9/28/16  
Blocks: 5 vs. Georgia Southern, 8/27/16

**PERSONAL**

- Parents are Michael and Mary Caffrey
- Intends to major in physical therapy at WVU

**2016 MATCH-BY-MATCH STATS**

Date	vs.	SP	K	E	TA	PCT	A	SA	DIG	BA-BS
8/26	at #9 Penn State	3	18	3	37	.405	1	0	3	0-0
8/27	vs. #19 North Carolina	3	17	6	50	.220	0	0	11	0-1
8/27	vs. Georgia Southern	3	11	4	28	.250	1	1	4	0-5
9/2	vs. Indiana State	5	27	12	74	.203	3	0	7	1-2
9/2	vs. Marshall	5	27	9	65	.277	4	0	5	1-0
9/3	vs. Morehead State	5	26	10	61	.262	0	1	10	0-2
9/9	at California	4	15	9	49	.122	0	3	10	0-3
9/10	vs. #19 Santa Clara	4	20	10	56	.179	0	5	16	0-0
9/10	vs. Grand Canyon	3	14	7	30	.233	0	4	0	0-0
9/12	at Pacific	4	14	8	48	.125	0	1	10	0-0
9/16	Winthrop	3	10	4	29	.207	1	2	10	0-3
9/17	Akron	3	17	4	32	.406	0	0	10	0-0
9/17	Dartmouth	3	16	5	37	.297	0	1	6	0-2
9/20	#5 Texas	4	26	11	58	.259	3	1	9	0-0
9/24	at Texas Tech	3	14	4	31	.323	0	2	8	0-3
9/28	TCU	5	21	10	60	.183	6	0	20	0-3
9/30	Iowa State	5	29	8	62	.339	0	2	7	1-2
10/7	Oklahoma	3	12	6	29	.214	2	2	9	0-1
10/8	Oklahoma	4	18	8	59	.169	1	0	12	0-0
10/12	at Robert Morris	3	17	10	41	.171	2	0	3	0-1
10/15	Baylor	4	17	12	55	.091	2	1	8	0-2

**CAREER STATS**

Year	MP	SP	K	K/S	E	TA	PCT	A	A/S	SA	SA/S	D	D/S	BS	BA	TB	B/S
2016	21	79	386	4.89	160	990	.228	26	0.33	27	0.34	178	2.25	3	30	33	0.42
Total	21	79	386	4.89	160	990	.228	26	0.33	27	0.34	178	2.25	3	30	33	0.42





## 2 | HALEY ROE

Senior | Setter | 5-10

Campbell, Calif.  
Saint Francis - Mountain View

### AWARDS & HONORS

### CAREER HIGHS

Kills: 4 vs. Baylor, 10/17/15  
Hitting: .600 vs. Baylor, 10/17/15  
Assists: 41 vs. Robert Morris, 10/7/15  
Aces: 3 at Kansas State, 10/10/15  
Digs: 16 vs. TCU, 9/28/16  
Blocks: 3 vs. Kansas, 11/21/15

### PERSONAL

- Parents are Truman and Laurie
- Birthday is December 3
- Major is fashion merchandising
- Dad played for CBA's Montana Golden Nuggets, sister Jenna played water polo at Indiana and sister Ashley played volleyball at UC Berkeley

### 2016 MATCH-BY-MATCH STATS

Date	vs.	SP	K	E	TA	.PCT	A	SA	DIG	BA-BS
8/26	at #9 Penn State	3	0	0	0	.000	13	0	2	0-0
8/27	vs. #18 North Carolina	3	0	1	2	-.500	23	0	4	0-0
8/27	vs. Georgia Southern	3	0	0	0	.000	18	1	5	0-0
9/2	vs. Indiana State	5	1	0	2	.500	33	0	8	0-1
9/2	vs. Marshall	5	0	3	4	-.750	26	0	3	0-0
9/3	vs. Morehead State	5	0	0	0	.000	25	0	3	0-2
9/9	at California	4	0	1	1	-1.000	29	0	8	0-0
9/10	vs. #19 Santa Clara	4	0	0	0	.000	24	0	10	0-0
9/10	vs. Grand Canyon	3	0	0	1	.000	18	0	0	0-0
9/12	at Pacific	4	0	0	0	.000	19	1	4	0-0
9/16	Winthrop	3	0	2	2	-1.000	18	0	2	0-0
9/17	Akron	3	0	0	0	.000	21	1	7	0-0
9/17	Dartmouth	3	0	5	5	-1.000	23	0	8	0-0
9/20	#5 Texas	4	0	0	0	.000	29	0	7	0-0
9/24	at Texas Tech	3	0	0	0	.000	19	0	2	0-0
9/28	TCU	5	0	2	2	-1.000	22	0	16	0-0
9/30	Iowa State	5	0	1	1	-1.000	26	0	15	0-0
10/7	Oklahoma	3	0	0	0	.000	17	0	3	0-0
10/8	Oklahoma	4	0	0	0	.000	17	1	4	0-0
10/12	at Robert Morris	3	0	0	1	.000	18	1	2	0-0
10/15	Baylor	4	0	1	1	-1.000	16	0	13	0-0

### CAREER STATS

Year	MP	SP	K	.K/S	E	TA	.PCT	A	.A/S	SA	SA/S	D	.D/S	BS	BA	TB	.B/S
2013	15	22	0	0.00	0	0	.000	18	0.82	2	0.09	17	0.77	0	0	0	0.00
2014	5	12	0	0.00	0	0	.000	0	0.00	1	0.08	9	0.75	0	0	0	0.00
2015	29	100	17	0.17	23	61	-.098	456	4.56	10	0.10	157	1.57	2	9	11	0.11
2016	21	79	1	0.01	16	22	-.682	454	5.75	5	0.06	126	1.59	0	1	1	0.01
Total	70	213	18	0.08	39	83	-.253	39	4.36	18	0.08	309	1.45	2	10	12	0.06



**3 | MORGAN MONTGOMERY**  
Junior | OH | 6-1

Centennial, Colo.  
Grandview HS

**AWARDS & HONORS**

- 2014 Academic All-Big 12 Rookie Team
- 2015 Dartmouth Tournament All-Tournament Team
- 2015 Big 12 All-Academic Team

**CAREER HIGHS**

- Kills: 31 vs. Marshall, 9/15/15
- Hitting: 1.00 at Texas, 11/12/14
- Assists: 5 vs. TCU, 9/30/15
- Aces: 3 (three times)
- Digs: 16 at IUPUI, 9/5/15
- Blocks: 4 at IUPUI, 9/5/15

**PERSONAL**

- Daughter of John and Jackie
- Birthday is October 3
- Major is exercise physiology
- Has one brother

**2016 MATCH-BY-MATCH STATS**

Date	vs.	SP	K	E	TA	.PCT	A	SA	DIG	BA-BS
8/26	at #9 Penn State	2	0	2	7	-.286	0	0	0	0-0
8/27	vs. #19 North Carolina	3	5	6	22	-.045	0	2	8	0-3
8/27	vs. Georgia Southern	3	3	4	13	-.077	0	0	5	0-0
9/2	vs. Indiana State	4	11	3	28	.286	0	2	4	0-1
9/2	vs. Marshall	5	10	10	39	.000	1	0	6	0-0
9/3	vs. Morehead State	5	5	4	18	.056	1	0	3	0-1
9/10	vs. #19 Santa Clara	3	2	0	4	.500	0	0	1	0-0
9/10	vs. Grand Canyon	1	0	1	3	-.333	0	0	1	0-0
9/12	at Pacific	3	2	2	10	.000	0	0	2	0-0
9/16	vs. Winthrop	2	4	2	10	.200	0	0	0	0-1
9/17	vs. Akron	3	6	4	19	.105	0	0	0	0-0
9/17	vs. Dartmouth	1	0	0	0	.000	0	0	0	0-0
9/24	at Texas Tech	3	6	2	16	.250	0	0	1	0-3
9/28	TCU	5	12	5	34	.206	2	0	9	0-0
9/30	Iowa State	5	7	4	27	.111	0	0	4	0-2
10/7	Oklahoma	3	1	4	10	-.300	0	0	0	0-2
10/8	Oklahoma	4	4	3	15	.067	0	2	3	0-7
10/12	at Robert Morris	3	4	4	18	.000	1	0	1	0-1
10/15	Baylor	4	8	4	28	.143	0	0	0	0-3

**CAREER STATS**

Year	MP	SP	K	.K/S	E	TA	.PCT	A	.A/S	SA	SA/S	D	.D/S	BS	BA	TB	.B/S
2014	14	25	38	1.52	25	97	.134	0	0.00	0	0.00	9	0.36	0	5	5	0.20
2015	29	100	375	3.75	205	1057	.121	16	0.16	19	0.19	171	1.71	5	32	37	0.37
2016	19	62	90	1.45	64	321	.081	5	0.08	6	0.10	49	0.79	0	24	24	0.39
Total	62	187	503	2.69	294	1475	.142	21	0.11	25	0.13	229	1.22	5	61	66	0.35







**4 | Gianna Gotterba**  
Junior | Libero | 5-6

Stockton, Calif.  
St. Mary's

**AWARDS & HONORS**

- 2014 Academic All-Big 12 Rookie Team
- 2015 Big 12 All-Academic Team
- Cal Classic All-Tournament Team
- WVU Invitational All-Tournament Team

**CAREER HIGHS**

- Kills: 2 at Baylor, 10/22/14
- Hitting: 1.00 (3 times)
- Assists: 6 vs. Robert Morris, 10/7/15
- Aces: 4 at IUPUI, 9/5/15
- Digs: 28 vs. Marshall, 9/2/16

**PERSONAL**

- Daughter of Eddie and Claudia
- Birthday is November 2
- Majoring in Journalism
- Father played baseball at San Jose State
- Twin sister Katrin is the libero at Pacific

**2016 MATCH-BY-MATCH STATS**

Date	vs.	SP	K	E	TA	.PCT	A	SA	DIG	BA-BS
8/26	at #9 Penn State	3	0	0	0	.000	2	0	11	0-0
8/27	vs. #19 North Carolina	3	0	0	1	.000	2	1	16	0-0
8/27	vs. Georgia Southern	3	0	0	0	.000	1	0	9	0-0
9/2	vs. Indiana State	5	0	0	2	.000	1	1	20	0-0
9/2	vs. Marshall	5	0	0	0	.000	2	0	28	0-0
9/3	vs. Morehead State	5	0	0	0	.000	0	1	14	0-0
9/9	at California	4	0	0	0	.000	4	0	11	0-0
9/10	vs. #19 Santa Clara	0	0	0	0	.000	5	2	25	0-0
9/10	vs. Grand Canyon	3	0	0	0	.000	2	0	13	0-0
9/12	at Pacific	4	0	0	0	.000	1	0	17	0-0
9/16	Winthrop	3	0	0	0	.000	1	0	7	0-0
9/17	Akron	3	0	0	0	.000	3	0	14	0-0
9/17	Dartmouth	3	0	0	0	.000	3	1	17	0-0
9/20	#5 Texas	4	0	0	0	.000	3	1	14	0-0
9/24	at Texas Tech	3	0	0	0	.000	2	2	12	0-0
9/28	TCU	5	0	1	1	-1.000	5	1	20	0-0
9/30	Iowa State	5	0	0	0	.000	4	0	9	0-0
10/7	Oklahoma	3	0	0	0	.000	1	1	3	0-0
10/8	Oklahoma	4	0	0	0	.000	5	1	21	0-0
10/12	at Robert Morris	3	0	0	0	.000	2	0	11	0-0
10/15	Baylor	4	0	0	0	.000	3	1	13	0-0

**CAREER STATS**

Year	MP	SP	K	.K/S	E	TA	.PCT	A	.A/S	SA	SA/S	D	.D/S	BS	BA	TB	.B/S
2014	27	96	4	0.04	4	10	.000	51	0.53	7	0.07	287	2.99	0	0	0	0.00
2015	29	100	0	0.00	2	2	-1.000	70	0.70	15	0.15	356	3.56	0	0	0	0.00
2016	21	79	0	0.00	1	4	-.250	51	0.65	13	0.16	305	3.86	0	0	0	0.00
Total	77	275	4	0.01	7	16	-.188	172	0.63	35	0.13	957	3.45	0	0	0	0.00





**6 | MIA SWANEGAN**  
Junior | MB | 6-1

Blue Springs, Mo.  
Blue Springs South HS | TCU

**AWARDS & HONORS**

**CAREER HIGHS**

Kills: 13 (three times)  
Hitting: .533 vs. Santa Clara, 9/11/16  
Assists: 2 vs. California, 9/9/16  
Aces: 3 vs. Texas Tech, 9/24/16  
Digs: 4, twice  
Blocks: 10 vs. California, 9/10/16

**PERSONAL**

- Daughter of Tim and Lynette
- As a twin sister named Zori as well as an older sister (Payton) and younger brother (Ethan)
- Majoring in strategic communications

**2016 MATCH-BY-MATCH STATS**

Date	vs.	SP	K	E	TA	.PCT	A	SA	DIG	BA-BS
8/26	at #9 Penn State	3	3	4	13	-.077	0	0	1	0-2
8/27	vs. #19 North Carolina	3	4	3	11	.091	0	1	0	1-2
8/27	vs. Georgia Southern	3	4	3	13	.077	0	0	1	1-5
9/2	vs. Indiana State	5	4	2	14	.143	1	0	1	1-7
9/2	vs. Marshall	5	6	0	15	.400	0	0	0	1-1
9/9	at California	4	7	4	17	.176	2	1	0	1-9
9/10	vs. #19 Santa Clara	4	9	1	15	.533	0	0	4	0-5
9/10	vs. Grand Canyon	3	6	3	12	.250	0	0	2	2-4
9/12	at Pacific	4	4	4	15	.000	0	0	4	1-8
9/16	Winthrop	3	8	4	18	.222	0	0	1	0-2
9/17	Akron	3	7	2	12	.417	0	0	0	0-4
9/17	Dartmouth	3	6	1	11	.455	0	0	1	1-4
9/20	#5 Texas	4	6	4	19	.105	0	0	0	0-3
9/24	at Texas Tech	3	12	1	25	.440	0	3	0	0-5
9/28	TCU	5	12	2	25	.400	1	2	0	1-7
9/30	Iowa State	5	10	1	23	.391	0	0	1	1-5
10/7	Oklahoma	3	8	4	18	.222	0	0	1	1-3
10/8	Oklahoma	4	9	8	28	.036	1	3	4	0-5
10/12	at Robert Morris	3	7	5	19	.105	0	0	3	0-2
10/15	Baylor	4	8	4	20	.200	0	1	0	0-8

**CAREER STATS**

Year	MP	SP	K	.K/S	E	TA	.PCT	A	.A/S	SA	SA/S	D	.D/S	BS	BA	TB	.B/S
2015	29	97	178	1.84	105	470	.155	0	0.00	1	0.01	20	0.21	7	64	71	0.73
2016	20	74	140	1.89	60	343	.233	5	0.07	11	0.15	24	0.32	12	91	103	1.39
Total	49	171	318	1.86	165	813	.188	5	0.03	12	0.07	44	0.26	19	155	174	1.02





**9 | ERIN SLINDE**  
Freshman | Setter | 6-0

Rosemount, Minn.  
Rosemount

**AWARDS & HONORS**

**CAREER HIGHS**

- Kills: 8 vs. Marshall, 9/2/16
- Hitting: .857 vs. Winthrop, 9/16/16
- Assists: 23 vs. Marshall, 9/2/13
- Aces: 1 vs. Morehead State, 9/3/16
- Digs: 2 vs. Texas Tech, 9/24/16
- Blocks: 6 vs. Grand Canyon, 9/10/16

**PERSONAL**

- Parents are Duane and Lisa
- Broadcast journalism major

**2016 MATCH-BY-MATCH STATS**

Date	vs.	SP	K	E	TA	PCT	A	SA	DIG	BA-BS
8/26	at #9 Penn State	3	1	3	5	-.400	8	0	1	0-1
8/27	vs. #19 North Carolina	3	1	0	5	.200	10	0	0	1-0
8/27	vs. Georgia Southern	3	0	1	3	-.333	14	0	1	0-3
9/2	vs. Indiana State	4	1	0	2	.500	13	0	0	0-2
9/2	vs. Marshall	5	8	0	10	.800	23	0	1	0-1
9/3	vs. Morehead State	5	3	1	10	.200	21	1	0	0-2
9/9	at California	4	3	0	5	.600	13	0	1	0-3
9/10	vs. #19 Santa Clara	4	3	1	4	.500	20	0	0	0-2
9/10	vs. Grand Canyon	3	4	0	5	.800	15	0	1	0-6
9/12	at Pacific	4	5	0	7	.714	18	0	0	0-3
9/16	Winthrop	3	6	0	7	.857	16	0	1	0-0
9/17	Akron	3	2	0	7	.286	11	0	1	0-1
9/17	Dartmouth	3	1	0	4	.250	15	0	0	0-2
9/20	#5 Texas	4	7	1	11	.545	19	0	1	0-4
9/24	at Texas Tech	3	1	0	4	.250	21	0	2	0-2
9/28	TCU	5	5	0	10	.500	23	0	1	0-4
9/30	Iowa State	5	1	2	9	-.111	29	0	1	0-2
10/7	Oklahoma	3	2	2	6	.000	9	0	0	0-2
10/8	Oklahoma	4	4	1	10	.300	19	0	1	0-3
10/12	at Robert Morris	3	1	2	5	-.200	12	0	1	0-2
10/15	Baylor	4	4	3	9	.111	21	0	1	0-3

**CAREER STATS**

Year	MP	SP	K	K/S	E	TA	PCT	A	A/S	SA	SA/S	D	D/S	BS	BA	TB	B/S
2016	21	78	63	0.81	17	138	.333	350	4.49	1	0.01	19	0.24	1	48	49	0.63
Total	21	78	63	0.81	17	138	.333	350	4.49	1	0.01	19	0.24	1	48	49	0.63





**10 | TAYLOR CROSS**  
Junior | DS | 5-7

Colorado Springs, Colo.  
Pine Creek HS/New Mexico

**AWARDS & HONORS**

**CAREER HIGHS**

- Kills: 1, twice
- Hitting: 1.00, twice
- Assists: 3, twice
- Aces: 2, twice
- Digs: 12, twice
- Blocks: N/A

**PERSONAL**

- Born January 10 in Colorado Springs, Colorado
- Parents are Don and Maria
- Brother, Marcus, plays football at Colorado Mesa
- Honor graduate with 4.32 GPA
- Principal's Honor Roll

**2016 MATCH-BY-MATCH STATS**

Date	vs.	SP	K	E	TA	.PCT	A	SA	DIG	BA-BS
8/26	at #9 Penn State	2	0	0	0	.000	0	0	1	0-0
8/27	vs. #19 North Carolina	2	0	0	0	.000	1	0	3	0-0
8/27	vs. Georgia Southern	3	0	0	0	.000	0	2	6	0-0
9/2	vs. Indiana State	5	0	0	0	.000	0	0	9	0-0
9/3	vs. Morehead State	3	0	0	0	.000	3	1	11	0-0
9/9	at California	4	0	0	1	.000	1	1	6	0-0
9/10	vs. #19 Santa Clara	4	1	0	1	1.000	1	1	12	0-0
9/10	vs. Grand Canyon	3	1	0	1	1.000	0	0	10	0-0
9/12	at Pacific	4	0	1	1	-1.000	3	0	12	0-0
9/16	Winthrop	3	0	0	0	.000	1	0	7	0-0
9/17	Akron	3	0	0	1	.000	1	0	4	0-0
9/17	Dartmouth	3	1	0	1	1.000	0	0	9	0-0
9/20	#5 Texas	4	0	0	0	.000	1	0	13	0-0
9/24	at Texas Tech	3	0	0	2	.000	1	0	2	0-0
9/28	TCU	5	0	0	0	.000	3	0	6	0-0
9/20	Iowa State	4	0	0	0	.000	0	0	2	0-0
10/7	Oklahoma	3	0	0	0	.000	2	0	9	0-0
10/8	Oklahoma	4	0	0	0	.000	1	0	7	0-0
10/12	at Robert Morris	1	0	0	0	.000	1	0	0	0-0
10/15	Baylor	2	0	0	0	.000	1	0	5	0-0

**CAREER STATS**

Year	MP	SP	K	.K/S	E	TA	.PCT	A	.A/S	SA	SA/S	D	.D/S	BS	BA	TB	.B/S
2015	22	52	0	0.00	0	2	.000	4	0.08	4	0.08	39	0.75	0	0	0	0.00
2016	20	65	3	0.05	1	8	.250	21	0.32	5	0.08	134	2.06	0	0	0	0.00
Total	42	117	3	0.03	1	10	.200	25	0.21	9	0.08	173	1.48	0	0	0	0.00







## 12 | GABI CUCKOVICH

Freshman | DS | 5-5

Rochester Hills, Mich.  
Stoney Creek HS

### AWARDS & HONORS

### CAREER HIGHS

Kills: N/A

Hitting: N/A

Assists: 2 vs. Marshall, 9/2/16

Aces: 1, twice

Digs: 14 vs. Indiana State, 9/2/16

Blocks: N/A

### PERSONAL

- Daughter of Deb and Alex Cagigal and Gus and Kim Cuckovich
- AAU Academic All-American
- Intends to major in business

### 2016 MATCH-BY-MATCH STATS

Date	vs.	SP	K	E	TA	.PCT	A	SA	DIG	BA-BS
8/26	at #9 Penn State	3	0	0	0	.000	0	0	3	0-0
8/27	vs. #19 North Carolina	2	0	0	0	.000	0	0	1	0-0
9/2	vs. Indiana State	5	0	0	0	.000	1	1	14	0-0
9/2	vs. Marshall	5	0	0	0	.000	2	1	8	0-0
9/3	vs. Morehead State	4	0	0	0	.000	0	0	2	0-0
9/9	at California	4	0	0	0	.000	0	0	0	0-0
9/10	vs. #19 Santa Clara	1	0	0	0	.000	0	0	0	0-0
9/10	vs. Grand Canyon	1	0	0	0	.000	0	0	0	0-0
9/12	at Pacific	2	0	0	0	.000	0	0	0	0-0
9/16	Winthrop	1	0	0	0	.000	1	0	0	0-0
9/17	Akron	1	0	0	0	.000	0	0	1	0-0
9/17	Dartmouth	1	0	0	0	.000	0	0	0	0-0
9/20	#5 Texas	1	0	0	0	.000	0	0	0	0-0
9/24	at Texas Tech	3	0	0	0	.000	1	0	6	0-0
9/28	TCU	2	0	0	0	.000	0	0	4	0-0
9/30	Iowa State	5	0	0	0	.000	0	0	6	0-0
10/7	Oklahoma	3	0	0	0	.000	0	0	1	0-0
10/8	Oklahoma	4	0	0	0	.000	1	0	9	0-0
10/12	Robert Morris	3	0	0	0	.000	0	0	2	0-0
10/15	Baylor	4	0	0	0	.000	0	0	4	0-0

### CAREER STATS

Year	MP	SP	K	.K/S	E	TA	.PCT	A	.A/S	SA	SA/S	D	.D/S	BS	BA	TB	.B/S
2016	20	52	0	0.00	0	0	.000	7	0.13	2	0.04	62	1.19	0	0	0	0.00
Total	20	52	0	0.00	0	0	.000	7	0.13	2	0.04	62	1.19	0	0	0	0.00



**13 | NATANIA LEVAK**  
Freshman | Right Side | 6-1

Pazin, Croatia  
Pazinski Kolegij

### 2016 MATCH-BY-MATCH STATS

Date	vs.	SP	K	E	TA	PCT	A	SA	DIG	BA-BS
8/26	at #9 Penn State	3	1	3	11	-.182	1	0	0	0-3
8/27	vs. #19 North Carolina	3	2	2	9	.000	0	0	1	0-0
8/27	vs. Georgia Southern	3	5	1	14	.286	0	0	0	0-4
9/2	vs. Indiana State	5	9	1	21	.381	0	0	7	0-7
9/2	vs. Marshall	5	6	6	23	.000	2	6	9	0-5
9/3	Morehead State	5	5	4	19	.053	1	0	1	0-4
9/9	at California	4	12	2	29	.345	0	2	7	0-4
9/10	vs. #19 Santa Clara	4	9	4	31	.161	1	0	9	0-4
9/10	vs. Grand Canyon	3	4	2	8	.250	3	1	2	0-2
9/12	at Pacific	4	3	1	15	.133	2	0	10	0-5
9/16	Winthrop	3	5	4	17	.059	0	0	4	1-1
9/17	Akron	3	3	1	10	.200	1	1	2	1-5
9/17	Dartmouth	3	8	4	26	.154	0	0	12	0-3
9/20	#5 Texas	4	8	10	29	-.069	2	0	3	0-0
10/12	Robert Morris	3	6	2	14	.286	1	0	5	0-2
10/15	Baylor	4	7	1	18	.333	1	1	1	0-2

### AWARDS & HONORS

#### CAREER HIGHS

- Kills: 12 at California, 9/9/16
- Hitting: .381 vs. Indiana State, 9/2/16
- Assists: 3 vs. Grand Canyon, 9/10/16
- Aces: 6 vs. Marshall, 9/2/16
- Digs: 10 vs. Pacific, 9/15/16
- Blocks: 7 vs. Indiana State, 9/2/16

#### PERSONAL

- Parents are Robert and Daniela Levak
- Has two siblings

### CAREER STATS

Year	MP	SP	K	K/S	E	TA	PCT	A	A/S	SA	SA/S	D	D/S	BS	BA	TB	B/S
2016	16	59	93	1.58	48	294	.153	15	0.25	11	0.19	73	1.24	2	51	53	0.90
Total	16	59	93	1.58	48	294	.153	15	0.25	11	0.19	73	1.24	2	51	53	0.90





**14 | MATIA HUGHES**  
Senior | DS | 5-5

Atlanta, Ga.  
North Gwinnett/NYU

**AWARDS & HONORS**

**CAREER HIGHS**

Kills: 2 vs. K-State, 10/28/15  
Hitting: 1.00 vs. Kansas State, 10/28/15  
Assists: 1 at Texas, 11/5/15  
Aces: 2 vs. Indiana State, 9/2/16  
Digs: 12 at TCU, 11/27/15  
Blocks:

**PERSONAL**

- Volunteers for Adopt-a-Highway, as a reading tutor and at health fairs
- Plans to attend law school
- Played basketball and softball in high school

**2016 MATCH-BY-MATCH STATS**

Date	vs.	SP	K	E	TA	PCT	A	SA	DIG	BA-BS
8/26	at #9 Penn State	2	0	0	0	.000	0	0	1	0-0
9/2	vs. Indiana State	2	0	0	0	.000	0	2	3	0-0
9/2	vs. Marshall	5	0	0	0	.000	0	0	1	0-0
9/3	vs. Morehead State	2	0	0	0	.000	0	0	2	0-0
9/10	Grand Canyon	1	0	0	0	.000	0	0	0	0-0
9/12	Pacific	1	0	0	0	.000	0	0	0	0-0
9/17	Akron	1	0	0	0	.000	0	0	0	0-0
9/30	Iowa State	2	0	0	0	.000	0	0	4	0-0
10/7	Oklahoma	2	0	0	0	.000	0	0	0	0-0
10/8	Oklahoma	2	0	0	0	.000	0	0	7	0-0
10/12	at Robert Morris	3	0	0	0	.000	0	0	7	0-0
10/15	Baylor	3	0	0	0	.000	3	1	4	0-0

**CAREER STATS**

Year	MP	SP	K	.K/S	E	TA	.PCT	A	.A/S	SA	SA/S	D	.D/S	BS	BA	TB	.B/S
2015	10	24	2	0.08	0	6	.333	3	0.12	2	0.08	50	2.08	0	0	0	0.00
2016	12	26	0	0.00	0	0	.000	3	0.12	3	0.12	30	1.15	0	0	0	0.00
Total	22	50	2	0.04	0	6	.333	6	0.12	5	0.10	80	1.60	0	0	0	0.00



## 2016 MATCH-BY-MATCH STATS



**15 | HANNAH SHREVE**  
Senior | Middle Blocker | 6-3

Charleston, W.Va.  
George Washington HS

### AWARDS & HONORS

- Big 12 Defensive Player of the Week (Nov. 24, 2014)
- 2013 Academic All-Big 12 Rookie Team
- 2015 Big 12 All-Academic Team
- Dr. Gerald Lage Award
- WVU Foundation Outstanding Senior

### CAREER HIGHS

Kills: 11 vs. Davidson, 9/19/15  
Hitting: .714 vs. K-State, 9/27/13  
Assists: 1 (twice)  
Aces: 3 vs. EMU, 9/4/15  
Digs: 2 (three times)  
Blocks: 10 vs. Baylor, 11/22/14

### PERSONAL

- Parents are Dan Shreve and Diana Sole-Walko
- Birthday is Feb. 4
- Has two brothers
- Big 12 Commissioner's Honor Roll
- Garrett Ford Academic Honor Roll

Date	vs.	SP	K	E	TA	.PCT	A	SA	DIG	BA-BS
8/26	at #9 Penn State	3	3	2	6	.167	0	0	1	0-2
8/27	vs. #19 North Carolina	3	7	3	14	.286	0	0	1	0-3
8/27	vs. Georgia Southern	3	8	1	14	.500	0	0	1	0-8
9/2	vs. Indiana State	5	5	2	13	.231	0	0	0	0-6
9/2	vs. Marshall	5	6	3	14	.214	0	0	0	0-3
9/3	vs. Morehead State	5	7	3	12	.333	0	0	0	0-1
9/9	at California	4	6	3	15	.200	0	0	1	1-3
9/10	vs. #19 Santa Clara	4	6	1	12	.417	0	0	0	0-1
9/10	vs. Grand Canyon	3	8	0	11	.727	0	0	0	0-4
9/12	at Pacific	4	8	3	22	.227	0	0	1	0-3
9/16	Winthrop	3	7	3	20	.200	0	0	0	0-3
9/17	Akron	3	6	1	13	.385	0	0	0	1-2
9/17	Dartmouth	3	5	1	10	.400	1	0	1	2-2
9/20	#5 Texas	4	4	4	18	.0001	1	0	0	0-1
9/24	at Texas Tech	3	9	2	16	.438	0	0	0	0-4
9/28	TCU	5	8	5	17	.176	0	0	1	2-1
9/30	Iowa State	5	2	1	6	.167	0	0	2	0-2
10/7	Oklahoma	3	5	5	14	.000	0	0	0	0-2
10/8	Oklahoma	4	3	3	14	.000	0	2	1	1-9
10/12	at Robert Morris	3	6	1	9	.556	0	0	0	0-4
10/15	Baylor	4	7	4	14	.214	0	0	0	0-2

### CAREER STATS

Year	MP	SP	K	.K/S	E	TA	.PCT	A	.A/S	SA	SA/S	D	.D/S	BS	BA	TB	.B/S
2013	18	34	25	0.74	10	57	.263	0	0.00	0	0.00	7	0.21	2	22	24	0.71
2014	15	54	59	1.09	24	148	.236	1	0.02	3	0.06	4	0.07	4	71	75	1.39
2015	28	95	113	1.19	56	278	.205	2	0.02	9	0.09	16	0.17	10	84	94	0.99
2016	21	79	126	1.59	51	284	.264	2	0.03	0	0.00	10	0.13	8	66	74	0.94
Total	82	262	212	1.23	141	767	.237	5	0.02	12	0.05	37	0.14	24	243	267	1.02







## 17 | KATELYN EVANS

Freshman | Outside Hitter | 6-1

Palmdale, Calif.  
Highland HS

### AWARDS & HONORS

### CAREER HIGHS

Kills: 14 vs. Morehead State, 9/3/16  
 Hitting: .500 vs. North Carolina, 8/27/16  
 Assists: 1, twice  
 Aces: N/A  
 Digs: 5 vs. Morehead State, 9/3/16  
 Blocks: 3, twice

### PERSONAL

- Daughter of Lasondra Minter
- Intends to major in exercise science

### 2016 MATCH-BY-MATCH STATS

Date	vs.	SP	K	E	TA	PCT	A	SA	DIG	BA-BS
8/28	#9 Penn State	1	1	0	5	.200	0	0	0	0-0
8/27	vs. #19 North Carolina	1	1	0	1	.500	0	0	1	0-1
8/27	vs. Georgia Southern	2	5	2	11	.273	0	0	0	0-1
9/2	vs. Indiana State	1	0	1	4	-.250	0	0	0	0-0
9/2	vs. Marshall	1	0	0	0	.000	0	0	0	0-0
9/3	vs. Morehead State	5	14	7	33	.212	0	0	5	0-0
9/9	at California	4	10	5	28	.179	0	0	2	0-2
9/10	vs. #19 Santa Clara	4	8	6	32	.062	0	0	3	1-0
9/10	vs. Grand Canyon	3	5	1	14	.286	0	0	0	1-0
9/12	at Pacific	4	9	3	37	.162	0	0	2	0-3
9/16	vs. Winthrop	3	2	3	7	-.143	0	0	1	0-0
9/17	vs. Akron	3	5	3	19	.105	1	0	3	0-0
9/17	vs. Dartmouth	3	2	2	5	.000	0	0	0	0-1
9/20	#5 Texas	4	11	4	28	.250	1	0	3	0-0
9/24	at Texas Tech	3	6	0	14	.429	0	0	2	0-3
9/28	TCU	5	11	9	40	.050	0	0	7	0-1
9/30	Iowa State	5	17	2	34	.441	0	0	2	0-1
10/7	Oklahoma	3	7	3	21	.190	0	0	0	0-0
10/8	Oklahoma	4	10	5	47	.106	0	0	3	1-5
10/15	Baylor	1	0	2	4	-.500	0	0	1	0-0

### CAREER STATS

Year	MP	SP	K	K/S	E	TA	PCT	A	A/S	SA	SA/S	D	D/S	BS	BA	TB	B/S
2016	20	58	124	2.14	58	385	.171	2	0.03	0	0.00	35	0.60	3	18	21	0.36
Total	20	58	124	2.14	58	385	.171	2	0.03	0	0.00	35	0.60	3	18	21	0.36



## The Automated ScoreBook

### West Virginia Combined Team Statistics (as of Oct 15, 2016)

#### All matches

Overall record: 11-10 Conf: 2-5 Home: 3-5 Away: 3-2 Neutral: 5-3

#	Player	sp	Attack				Set		Serve			Dig			Blocking					points		
			k	k/s	e	ta	pct	a	a/s	sa	se	sa/s	re	dig	dig/s	bs	ba	total	blk/s		be	bhe
1	Caffrey, Payton	79	386	4.89	160	990	.228	26	0.33	27	44	0.34	22	178	2.25	3	30	33	0.42	4	0	-
17	Evans, Katelyn	58	124	2.14	58	385	.171	2	0.03	0	3	0.00	2	35	0.60	3	18	21	0.36	12	0	-
6	Swanegan, Mia	74	140	1.89	60	343	.233	5	0.07	11	36	0.15	0	24	0.32	12	91	103	1.39	10	1	-
15	Shreve, Hannah	79	126	1.59	51	284	.264	2	0.03	0	0	0.00	3	10	0.13	8	66	74	0.94	17	1	-
13	Levak, Natania	59	93	1.58	48	294	.153	15	0.25	11	23	0.19	3	73	1.24	2	51	53	0.90	10	0	-
3	Montgomery, Morgan	62	90	1.45	64	321	.081	5	0.08	6	16	0.10	3	49	0.79	0	24	24	0.39	2	1	-
9	Slinde, Erin	78	63	0.81	17	138	.333	350	4.49	1	3	0.01	1	19	0.24	1	48	49	0.63	5	23	-
7	Smith, Zuri	3	2	0.67	0	5	.400	0	0.00	0	0	0.00	0	0	0.00	0	0	0	0.00	0	0	-
5	Avoletta, Julia	2	1	0.50	2	4	-.250	0	0.00	0	2	0.00	0	0	0.00	1	2	3	1.50	1	0	-
10	Cross, Taylor	65	3	0.05	1	8	.250	21	0.32	5	14	0.08	13	134	2.06	0	0	0	0.00	0	3	-
2	Roe, Haley	79	1	0.01	16	22	-.682	454	5.75	5	15	0.06	0	126	1.59	0	1	1	0.01	2	9	-
14	Hughes, MaTia	26	0	0.00	0	0	.000	3	0.12	3	5	0.12	3	30	1.15	0	0	0	0.00	0	0	-
4	Gotterba, Gianna	79	0	0.00	1	4	-.250	51	0.65	13	20	0.16	14	305	3.86	0	0	0	0.00	0	0	-
12	Cuckovich, Gabrielle	52	0	0.00	0	0	.000	7	0.13	2	3	0.04	8	62	1.19	0	0	0	0.00	0	0	-
11	Hallow, Maggie	12	0	0.00	0	0	.000	0	0.00	2	1	0.17	0	4	0.33	0	0	0	0.00	0	0	-
WEST VIRGINIA		79	1029	13.03	478	2798	.197	941	11.91	86	185	1.09	80	1049	13.28	30	331	195.5	2.47	63	38	-
Opponents		79	932	11.80	419	2648	.194	878	11.11	80	152	1.01	86	1079	13.66	29	338	198.0	2.51	29	41	-

Team Statistics	WVU	OPP	Date	Opponent	Score	Score by set	Att.	
<b>ATTACK</b>								
Kills	1029	932	Aug 26	at #9 Penn State	L 0-3	13-25,13-25,17-25	3231	
Errors	478	419	Aug 27	vs #19 North Carolina	L 0-3	16-25,26-28,21-25	0	
Total Attacks	2798	2648	Aug 27	vs Georgia Southern	w 3-0	25-20,25-21,25-17	0	
Attack Pct	.197	.194	Sep 2	vs Indiana State	w 3-2	20-25,22-25,25-18,25-22,15-13	0	
Kills/Set	13.0	11.8	Sep 2	vs Marshall University	L 2-3	17-25,25-20,28-26,24-26,7-15	1447	
<b>SET</b>								
Assists	941	878	Sep 3	vs Morehead State	w 3-2	24-26,16-25,26-24,25-19,15-8	0	
Attempts	2588	2500	Sep 09	at California	w 3-1	18-25,25-20,25-23,25-21	1133	
Assist Pct	.364	.351	Sep 10	vs #19 Santa Clara	L 1-3	25-16,24-26,20-25,21-25	0	
Assists/Set	11.9	11.1	Sep 10	vs Grand Canyon	w 3-0	25-18,25-14,25-19	0	
<b>SERVE</b>								
Aces	86	80	Sep 12	at Pacific	L 1-3	25-20,15-25,23-25,23-25	605	
Errors	185	152	Sep 16	WINTHROP	w 3-0	25-17,25-21,25-20	450	
Attempts	1742	1728	Sep 17	DARTMOUTH	w 3-0	25-22,25-18,25-20	332	
Serve Pct	.894	.912	Sep 16	AKRON	w 3-0	25-18,25-14,25-14	450	
Aces/Set	1.1	1.0	*Sep 20	#5 TEXAS	L 1-3	26-24,26-28,18-25,15-25	615	
<b>SERVE RECEPTIONS</b>								
Errors	80	86	*Sep 24	at Texas Tech	w 3-0	25-19,25-23,25-20	349	
Errors/Set	1.0	1.1	*Sep 28	vs TCU	w 3-2	25-18,24-26,21-25,25-18,15-10	472	
Attempts	1574	1555	*Sep 30	IOWA STATE	L 2-3	20-25,25-22,27-25,19-25,15-17	502	
Reception Pct	.949	.945	*Oct 07	OKLAHOMA	L 0-3	19-25,24-26,16-25	726	
<b>DEFENSE</b>								
Digs	1049	1079	*Oct 08	OKLAHOMA	L 1-3	25-19,23-25,22-25,22-25	1251	
Digs/Set	13.3	13.7	Oct 12	at Robert Morris	w 3-0	25-22,26-24,25-15	93	
<b>BLOCKING</b>								
Block Solo	30	29	*Oct 15	BAYLOR	L 1-3	22-25,16-25,25-22,21-25	802	
Block Assist	331	338						
Total Blocks	195.5	198.0						
Blocks/Set	2.5	2.5						
Block Errors	63	29						
Ball handling errors	38	41						
<b>ATTENDANCE</b>								
Total	5128	5411						
Dates/Avg Per Date	8/641	5/1082						
Neutral site #/Avg	8/240							
Current win streak	0	-						
Home win streak	0	-						

Record in 3-set matches:7-3 • Record in 4-set matches:1-5 • Record in 5-set matches:3-2



## The Automated ScoreBook

### West Virginia Combined Team Statistics (as of Oct 16, 2016)

#### Conference matches

RECORD:	OVERALL	HOME	AWAY	NEUTRAL
ALL GAMES	2-5	0-5	1-0	1-0
CONFERENCE	2-5	0-5	1-0	1-0
NON-CONFERENCE	0-0	0-0	0-0	0-0

#	Player	sp	Attack				Set		Serve			Dig		Blocking					points			
			k	k/s	e	ta	pct	a	a/s	sa	se	sa/s	re	dig	dig/s	bs	ba	total		blk/s	be	bhe
1	Caffrey, Payton	28	137	4.89	59	353	.221	14	0.50	9	18	0.32	6	73	2.61	1	11	12	0.43	0	0	-
17	Evans, Katelyn	25	62	2.48	25	188	.197	1	0.04	0	0	0.00	0	18	0.72	1	10	11	0.44	3	0	-
6	Swanegan, Mia	28	65	2.32	24	158	.259	2	0.07	9	16	0.32	0	6	0.21	3	36	39	1.39	6	1	-
13	Levak, Natania	8	15	1.88	11	47	.085	3	0.38	1	5	0.12	0	4	0.50	0	2	2	0.25	0	0	-
3	Montgomery, Morgan	24	38	1.58	22	130	.123	2	0.08	2	9	0.08	1	17	0.71	0	17	17	0.71	1	0	-
15	Shreve, Hannah	28	38	1.36	24	99	.141	1	0.04	0	0	0.00	3	4	0.14	3	21	24	0.86	5	1	-
9	Slinde, Erin	28	24	0.86	9	59	.254	141	5.04	0	3	0.00	1	7	0.25	0	20	20	0.71	3	5	-
4	Gotterba, Gianna	28	0	0.00	1	1	-1.000	23	0.82	7	5	0.25	4	92	3.29	0	0	0	0.00	0	0	-
11	Hallow, Maggie	3	0	0.00	0	0	.000	0	0.00	0	0	0.00	0	2	0.67	0	0	0	0.00	0	0	-
12	Cuckovich, Gabrielle	22	0	0.00	0	0	.000	3	0.14	0	1	0.00	5	30	1.36	0	0	0	0.00	0	0	-
10	Cross, Taylor	25	0	0.00	0	2	.000	9	0.36	0	4	0.00	3	44	1.76	0	0	0	0.00	0	1	-
2	Roe, Haley	28	0	0.00	4	4	-1.000	146	5.21	1	6	0.04	0	60	2.14	0	0	0	0.00	0	4	-
7	Smith, Zuri	2	0	0.00	0	3	.000	0	0.00	0	0	0.00	0	0	0.00	0	0	0	0.00	0	0	-
14	Hughes, MaTia	9	0	0.00	0	0	.000	3	0.33	1	2	0.11	2	16	1.78	0	0	0	0.00	0	0	-
	#TM	-	-	-	-	-	-	-	-	-	-	-	-	-	-	-	-	-	-	-	-	-
	WEST VIRGINIA	28	379	13.54	179	1044	.192	348	12.43	30	69	1.07	25	373	13.32	8	117	66.5	2.38	18	12	-
	Opponents	28	356	12.71	134	958	.232	334	11.93	25	51	0.89	30	397	14.18	12	139	81.5	2.91	10	16	-

Team Statistics	WVU	OPP
<b>ATTACK</b>		
Kills	379	356
Errors	179	134
Total Attacks	1044	958
Attack Pct	.192	.232
Kills/Set	13.5	12.7
<b>SET</b>		
Assists	348	334
Attempts	889	820
Assist Pct	.391	.407
Assists/Set	12.4	11.9
<b>SERVE</b>		
Aces	30	25
Errors	69	51
Attempts	613	641
Serve Pct	.887	.920
Aces/Set	1.1	0.9
<b>SERVE RECEPTIONS</b>		
Errors	25	30
Errors/Set	0.9	1.1
Attempts	590	544
Reception Pct	.958	.945
<b>DEFENSE</b>		
Digs	373	397
Digs/Set	13.3	14.2
<b>BLOCKING</b>		
Block Solo	8	12
Block Assist	117	139
Total Blocks	66.5	81.5
Blocks/Set	2.4	2.9
Block Errors	18	10
Ball handling errors	12	16
<b>ATTENDANCE</b>		
Total	3896	349
Dates/Avg Per Date	5/779	1/349
Neutral site #/Avg	1/472	
Current win streak	0	-

Date	Opponent	Score	Score by set	Att.
*Sep 20	#5 TEXAS	L 1-3	26-24,26-28,18-25,15-25	615
*Sep 24	at Texas Tech	w 3-0	25-19,25-23,25-20	349
*Sep 28	vs TCU	w 3-2	25-18,24-26,21-25,25-18,15-10	472
*Sep 30	IOWA STATE	L 2-3	20-25,25-22,27-25,19-25,15-17	502
*Oct 07	OKLAHOMA	L 0-3	19-25,24-26,16-25	726
*Oct 08	OKLAHOMA	L 1-3	25-19,23-25,22-25,22-25	1251
*Oct 15	BAYLOR	L 1-3	22-25,16-25,25-22,21-25	802

Record in 3-set matches: 1-1  
Record in 4-set matches: 0-3  
Record in 5-set matches: 1-1



## MATCH 1 vs. No. 9 Penn State

### Volleyball Box Score

West Virginia vs #9 Penn State (Aug 26, 2016 at University Park, Pa.)

#	West Virginia	Attack				Ast	Serve			Block				BH	Pt
		S	K	E	TA		Pct	SA	SE	RE	Dig	BS	BA		
1	Caffrey, Payton	3	18	3	37	.405	1	0	3	0	3	0	0	0	0
2	Roe, Haley	3	0	0	0	.000	13	0	0	0	2	0	0	0	1
3	Montgomery, Morgan	2	0	2	7	-.286	0	0	0	0	0	0	0	0	0
6	Swanegan, Mia	3	3	4	13	-.077	0	0	2	0	1	0	2	0	0
13	Levak, Natania	3	1	3	11	-.182	1	0	2	0	0	0	3	1	0
15	Shreve, Hannah	3	3	2	6	.167	0	0	0	0	1	0	2	0	0
4	Gotterba, Gianna	3	0	0	0	.000	2	0	0	5	11	0	0	0	0
9	Slinde, Erin	3	1	3	5	-.400	8	0	0	1	1	0	1	0	0
10	Cross, Taylor	2	0	0	0	.000	0	0	0	1	1	0	0	0	1
12	Cuckovich, Gabrielle	3	0	0	0	.000	0	0	1	0	3	0	0	0	0
14	Hughes, MaTia	2	0	0	0	.000	0	0	1	0	1	0	0	0	0
17	Evans, Katelyn	1	1	0	5	.200	0	0	1	0	0	0	0	1	0
Totals		3	27	17	84	.119	25	0	10	6	24	0	8	2	2

#### Team Attack By Set

Set	K	E	TA	Pct
1	7	5	25	.080
2	8	7	26	.038
3	12	5	33	.212

TOTAL TEAM BLOCKS: 4.0

#### SET SCORES

	1	2	3	Team Records:
West Virginia (0)	13	13	17	0-1
Penn State (3)	25	25	25	1-0

#	Penn State	Attack				Ast	Serve			Block				BH	Pt
		S	K	E	TA		Pct	SA	SE	RE	Dig	BS	BA		
5	Frantti, Ali	3	8	1	18	.389	2	2	0	0	3	0	1	0	0
7	Detering, Abby	3	3	0	5	.600	29	0	2	0	5	0	0	0	0
11	Gorrell, Tori	3	6	0	9	.667	0	0	0	0	2	1	1	0	0
15	Washington, Haleigh	3	10	0	14	.714	0	0	1	0	0	0	3	0	0
19	Thelem, Heidi	3	3	2	7	.443	0	0	0	0	0	0	2	0	0
22	Lee, Simone	3	10	2	20	.400	1	2	1	0	4	0	1	0	0
3	White, Kendall	3	0	0	0	.000	2	0	0	0	16	0	0	0	0
4	Rivera, Wilma	2	0	0	0	.000	0	2	3	0	3	0	0	0	0
8	Pierce, Lainy	2	0	0	0	.000	1	0	0	0	3	0	0	0	0
10	Muller, Carley	1	0	0	0	.000	0	0	0	1	0	0	0	0	0
12	Holcomb, Keeton	2	0	0	0	.000	0	0	1	0	0	0	0	0	1
13	Krause, Taylor	1	0	0	0	.000	0	0	0	0	0	0	0	0	0
24	Broerman, Laura	1	0	0	0	.000	1	0	1	0	0	0	0	0	0
Totals		3	40	5	73	.479	36	6	9	0	35	2	8	1	1

#### Team Attack By Set

Set	K	E	TA	Pct
1	13	1	19	.632
2	15	2	22	.591
3	12	2	32	.312

TOTAL TEAM BLOCKS: 6.0

Site: University Park, Pa. (Recreation Building)

Date: Aug 26, 2016 Attend: 3231 Time: 1:23

Referees: Mike Paull, Carla Bunner

Penn State Classic Match 2.

## MATCH 3 vs. GEORGIA SOUTHERN

### Volleyball Box Score

2016 Penn State Women's Volleyball

Georgia Southern vs West Virginia (Aug 27, 2016 at University Park, Pa.)

#	Georgia Southern	Attack				Ast	Serve			Block				BH	Pts
		S	K	E	TA		Pct	SA	SE	RE	Dig	BS	BA		
6	Reichard, Lauren	3	2	2	13	.000	0	1	1	0	1	3	1	0	5.5
7	Chevallier, Megan	3	11	4	21	.333	0	0	0	0	0	0	5	0	13.5
10	Murray, Cathrine	3	6	7	17	-.059	0	1	1	7	0	0	1	0	7.0
13	Bange, Katie	3	1	5	14	-.286	17	0	0	0	3	0	3	0	2.5
17	Wenger, Anna	3	6	6	16	.000	0	0	1	2	0	0	0	0	6.0
21	Bosworth, Reilly	3	1	1	7	.000	0	0	0	0	0	5	1	0	3.5
1	Birch, Brooke	1	0	0	0	.000	0	0	0	0	0	0	0	0	0.0
4	Spencer, Stephanie	3	2	3	7	-.143	0	0	2	4	0	0	0	0	2.0
5	Meins, Kelsey	2	0	0	0	.000	0	0	0	0	0	0	0	0	0.0
8	Beecher, Alex	3	0	0	1	.000	3	0	2	0	13	0	0	0	0.0
14	Koetter, Kendra	3	0	0	0	.000	9	0	1	0	3	0	0	0	0.0
18	McColl, Casey	3	0	0	0	.000	0	1	1	0	3	0	0	0	1.0
Totals		3	29	28	96	.010	29	3	6	4	35	1	16	3	41.0

#### Team Attack By Set

Set	K	E	TA	Pct	Sideout	Pct
1	11	10	29	.034	11-24	45%
2	11	10	38	.026	13-25	51%
3	7	8	29	-.034	11-24	45%

#### SET SCORES

	1	2	3	Team Records:
Georgia Southern (0)	20	21	17	0-3
West Virginia (3)	25	25	25	1-2

TOTAL TEAM BLOCKS: 9.0

#	West Virginia	Attack				Ast	Serve			Block				BH	Pts
		S	K	E	TA		Pct	SA	SE	RE	Dig	BS	BA		
1	Caffrey, Payton	3	11	4	28	.250	1	1	4	0	4	0	5	0	14.5
2	Roe, Haley	3	0	0	0	.000	18	1	0	0	5	0	0	0	1.0
3	Montgomery, Morgan	3	3	4	13	-.077	0	0	1	0	5	0	0	0	3.0
6	Swanegan, Mia	3	4	3	13	.077	0	0	2	0	1	1	5	0	7.5
13	Levak, Natania	3	5	1	14	.286	0	0	0	0	0	4	1	0	7.0
15	Shreve, Hannah	3	8	1	14	.500	0	0	0	1	0	8	0	0	12.0
4	Gotterba, Gianna	3	0	0	0	.000	1	0	2	2	9	0	0	0	0.0
9	Slinde, Erin	3	0	1	3	-.333	14	0	0	0	1	0	3	0	1.5
10	Cross, Taylor	3	0	0	0	.000	0	2	0	1	6	0	0	0	2.0
17	Evans, Katelyn	2	5	2	11	.273	0	0	0	0	0	1	1	0	5.5
Totals		3	36	16	96	.208	34	4	9	3	32	1	26	2	54.0

#### Team Attack By Set

Set	K	E	TA	Pct	Sideout	Pct
1	12	4	29	.276	12-21	57%
2	9	6	27	.111	13-21	61%
3	15	6	40	.225	12-18	66%

Site: University Park, Pa. (Recreation Building)

Date: Aug 27, 2016 Attend: Time: 1:16

Referees: Carla Bunner, Mike Paull

Penn State Classic Match 5

TOTAL TEAM BLOCKS: 14.0

Tie scores 1 2 3 Total

Lead change 5 9 1 15

6

## MATCH 2 vs. No. 19 North Carolina

### Volleyball Box Score

2016 Penn State Women's Volleyball

#19 North Carolina vs West Virginia (Aug 27, 2016 at University Park, Pa.)

#	North Carolina	Attack				Ast	Serve			Block				BH	Pts
		S	K	E	TA		Pct	SA	SE	RE	Dig	BS	BA		
3	Beth Nordhorn	1	3	0	3	1.000	0	0	0	0	0	0	2	0	4.0
5	Taylor Fricano	3	3	2	9	.111	0	0	2	0	2	0	0	0	4.5
12	Julia Scoles	3	11	3	33	.242	0	0	1	0	14	0	1	0	11.5
17	Abigail Curry	3	1	1	5	.000	28	0	1	0	8	0	0	0	1.0
21	Hayley McCorkle	3	5	2	11	.273	0	0	0	0	0	4	0	0	7.0
43	Taylor Leath	1	2	0	4	.500	0	0	1	0	2	0	1	0	2.5
1	Mariah Evans	3	0	0	1	.000	5	0	1	0	2	0	0	0	0.0
4	Taylor Borup	2	8	2	21	.286	0	0	1	0	1	0	1	0	8.5
8	Casey Jacobs	1	0	0	0	.000	0	0	0	0	0	0	0	0	0.0
10	Sydnye Fields	2	6	3	11	.273	0	0	0	0	0	0	6	0	9.0
11	Sheila Doyle	3	0	0	0	.000	7	1	0	3	13	0	0	0	1.0
13	Mia Fradenburg	1	0	0	0	.000	0	0	0	0	0	0	0	0	0.0
18	Tatiana Durr	3	0	0	2	.000	0	0	0	0	3	0	0	0	0.0
20	Taylor Treacy	3	6	1	15	.333	1	0	0	0	1	0	5	0	1.5
Totals		3	45	14	115	.270	41	1	7	4	47	0	23	0	57.5

#### Team Attack By Set

Set	K	E	TA	Pct	Sideout	Pct
1	13	2	30	.367	13-16	81%
2	20	9	53	.208	17-27	62%
3	12	3	32	.281	14-21	66%

#### SET SCORES

	1	2	3	Team Records:
North Carolina (3)	25	28	25	2-0
West Virginia (0)	16	26	21	0-2

TOTAL TEAM BLOCKS: 11.5

#	West Virginia	Attack				Ast	Serve			Block				BH	Pts
		S	K	E	TA		Pct	SA	SE	RE	Dig	BS	BA		
1	Caffrey, Payton	3	17	6	50	.220	0	0	2	0	11	0	1	0	17.5
2	Roe, Haley	3	0	1	2	-.500	23	0	0	0	4	0	0	0	2.0
3	Montgomery, Morgan	3	5	6	22	-.045	0	2	2	0	8	0	3	1	











# MATCH 10 vs. BAYLOR

## Volleyball Box Score The Automated ScoreBook Baylor vs West Virginia (Oct 15, 2016 at Morgantown, W.Va.)

#	Baylor	S	Attack			Pct	Ast	Serve			Dig	Block				Pts
			K	E	TA			SA	SE	RE		BS	BA	BE	BH	
2	Freiberg, Camryn	4	12	3	26	.346	0	0	0	0	0	0	7	1	0	.
4	Staiger, Katie	4	18	5	47	.277	0	1	2	0	7	0	2	0	0	.
8	Philo, Aniah	4	5	5	22	.000	1	1	1	1	5	0	3	1	0	.
9	Reed, Morgan	4	0	1	7	-.143	42	0	0	1	7	0	1	0	3	.
12	Thomas, Nicole	4	5	3	12	.167	0	0	0	0	0	0	4	1	0	.
21	Fritcher, Ashley	4	5	2	16	.188	0	0	0	0	1	0	5	1	0	.
1	Wulf, Tara	4	0	0	0	.000	0	0	1	2	8	0	0	0	0	.
3	Brusek, Jana	4	0	0	0	.000	0	1	0	1	24	0	0	0	0	.
28	Banister, Alex	4	0	0	0	.000	0	1	2	0	3	0	0	0	0	.
Totals		4	45	19	130	.200	43	4	6	5	55	0	22	4	3	.

### Team Attack By Set

Set	K	E	TA	Pct
1	12	5	34	.206
2	12	2	30	.333
3	9	6	38	.079
4	12	6	28	.214

TOTAL TEAM BLOCKS: 11.0

### SET SCORES

	1	2	3	4	Team Records:
Baylor (3)	25	25	22	25	16-6, 4-2
West Virginia (1)	22	16	25	21	11-10, 2-5

#	West Virginia	S	Attack			Pct	Ast	Serve			Dig	Block				Pts
			K	E	TA			SA	SE	RE		BS	BA	BE	BH	
1	Caffrey, Payton	4	17	12	55	.091	2	1	5	1	8	0	2	0	0	.
6	Swanegan, Mia	4	8	4	20	.200	0	1	2	0	0	0	8	0	0	.
9	Slinde, Erin	4	4	3	9	.111	21	0	2	0	1	0	3	0	0	.
12	Cuckovich, Gabrielle	4	0	0	0	.000	0	0	0	1	4	0	0	0	0	.
14	Hughes, MaTia	3	0	0	0	.000	3	1	1	1	5	0	0	0	0	.
15	Shreve, Hannah	4	7	4	14	.214	0	0	0	1	0	0	2	0	0	.
2	Roe, Haley	4	0	1	1	-1.000	16	0	1	0	13	0	0	0	0	.
3	Montgomery, Morgan	4	8	4	28	.143	0	0	0	0	0	0	3	0	0	.
4	Gotterba, Gianna	4	0	0	0	.000	3	1	2	0	13	0	0	0	0	.
7	Smith, Zuri	1	0	0	2	.000	0	0	0	0	0	0	0	0	0	.
10	Cross, Taylor	2	0	0	0	.000	1	0	1	0	5	0	0	0	0	.
13	Levak, Natania	4	7	1	18	.333	1	1	2	0	1	0	2	0	0	.
17	Evans, Katelyn	1	0	2	4	-.500	0	0	0	0	1	0	0	0	0	.
Totals		4	51	31	151	.132	47	5	16	4	51	0	20	0	0	.

### Team Attack By Set

Set	K	E	TA	Pct
1	13	9	38	.105
2	12	9	36	.083
3	16	7	47	.191
4	10	6	30	.133

TOTAL TEAM BLOCKS: 10.0

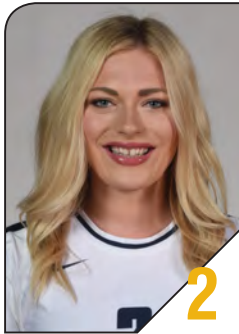
Site: Morgantown, W.Va. (WVU Coliseum)  
Date: Oct 15, 2016 Attend: 802 Time: 2:14  
Referees:







**OH** | **PAYTON CAFFREY**  
6-0 | Fr. | Chuluota, Fla.



**S** | **HALEY ROE**  
5-10 | Sr. | Campbell, Calif.



**OH** | **MORGAN MONTGOMERY**  
6-1 | Jr. | Centennial, Colo.



**DS/L** | **GIANNA GOTTERBA**  
5-6 | Jr. | Stockton, Calif.



**S/RS** | **JULIA AVOLETTA**  
6-2 | Fr. | Sterling, Va.



**MB** | **MIA SWANEKAN**  
6-1 | Jr. | Blue Springs, Mo.



**OH/MB** | **ZURI SMITH**  
6-5 | r-Fr. | Sumter, S.C.



**S** | **ERIN SLINDE**  
6-0 | Fr. | Rosemount, Minn.



**DS** | **TAYLOR CROSS**  
5-7 | Jr. | Colorado Springs, Colo.



**OH/DS** | **MAGGIE HALLOW**  
5-9 | Fr. | Greenville, S.C.



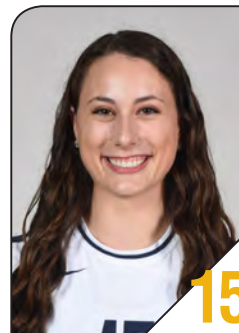
**DS** | **GABI CUCKOVICH**  
5-5 | Fr. | Rochester Hills, Mich.



**RS/MB** | **NATANIA LEVAK**  
6-1 | Fr. | Pazin, Croatia



**L/DS** | **MATIA HUGHES**  
5-5 | Sr. | Atlanta, Ga.



**MB** | **HANNAH SHREVE**  
6-3 | Sr. | Charleston, W.Va.



**OH** | **KATELYN EVANS**  
6-1 | Fr. | Palmdale, Calif.



**AARON HASTINGS**  
Operations Asst., Second Season



**REED SUNAHARA**  
Head Coach, Second Season



**REBECCA RUDNICK**  
Assistant Coach, Second Season



**JOJIT CORONEL**  
Assistant Coach, First Season



**THIAGO BARBOSA**  
Volunteer Assistant, Third Season

